

'changing lives and building community through Jesus'

**uplyme church**

# **Parish News**

**November 2020**



[www.uplymechurch.org.uk](http://www.uplymechurch.org.uk)

# Uplyme Church Services

SERVICES WILL NOW BE TAKING PLACE IN CHURCH ON SUNDAYS. PLEASE SEE THE NOTICE IN LAST MONTHS MAGAZINE FOR FURTHER DETAILS.

**The Uplyme Church Service is on YouTube at 10am** (or any time later if you wish) followed by a live get together over DIY coffee on Zoom at 11am.

**You can view the service on YouTube by clicking this link:**  
**[www.youtube.com/channel/UCcIQWLSAS49TN4ACnJTeFIQ](https://www.youtube.com/channel/UCcIQWLSAS49TN4ACnJTeFIQ)**

This will take you to the Uplyme Church YouTube channel – you can click it now and will see recordings of previous week's services. Early on Sunday morning the service will become visible. There will be two versions – a **traditional version** and a more **contemporary version**. The main content is the same in each but some of the liturgy and the songs are different. You can watch on your computer, smart phone, tablet or Internet connected TV.

After the service, at 11.30am, there will be a time of fellowship on Zoom or dial in if you don't have a tablet, phone or computer with a camera. Details of how to access this are given below.

**Join Zoom Catch up chat at 11.30 am –**  
**<https://us02web.zoom.us/j/81020110380>**

**The meeting ID is 810 2011 0380.**

**If you would like to join the post service chat by phone (audio only) you can do this by ringing 0203 481 5240 and entering the meeting id: 810 2011 0380 and Password: 335545 when asked to do so.**

**We look forward to worshipping with you**

There are Services broadcast from Exeter Diocese each Sunday.  
Go to - **[www.exeter.anglican.org](http://www.exeter.anglican.org)** and follow the links.

The BBC Radio 4 broadcast a service every Sunday at 8.10am and for further details and services please look at their schedules on their website **[www.bbc.co.uk](http://www.bbc.co.uk)**

**Join Uplyme Church every Sunday for an online service!**



# November 2020

## CONTENTS

Service News	Inside Front Cover
Contents	1
Uplyme Church staying in contact	2
From the Editor	3
The Sedgewick Papers	4 & 5
Light a candle to remember	6
Remembrance Service details	7
Walks around the Axe Valley Mission Community 4	8 & 9
Axe valley Mission Community Diocesan Map	10
Adverts	11 & 12
Mrs Ethelston's School & Shining Stars	13
News from your Local	14 & 15
KG5 Playing field update	16
The Cenotaph - 100 years	17
Interesting snippets	18
Mouse makes	19
Uplyme & Lyme regis Horticultural Society	20
Axminster & Lyme Cancer Support	21
Parish Council Report	22, 23 & 24
Adverts	25 & 26
Could you be a Governor? & Saturday Football	27
Hort Thorts from Nigel Ball	28
News from the Town Mill	29
Trinity Matters	30 & 31
Village Hall Booking dates	32
Parish News Distributor & Mobile Library	Inside Back Cover

**IF YOU THINK YOU COULD DELIVER A FEW MAGS, PLEASE GET IN TOUCH**

## Parish News Copy Deadlines

Please remember the **NEXT** issue of the magazine is for **December** and all articles up to and including things for early **January** should be with us by the **10th November**

**Email to - [parishnews@uplymechurch.org.uk](mailto:parishnews@uplymechurch.org.uk)**



# Uplyme Church Staying Connected

Through the lock down period, Uplyme Church's YouTube and telephone services, combined with their Zoom fellowship meet-ups provided invaluable social contact, especially for elderly and shielding members of the community.

At the start of lockdown a dedicated team had to rapidly learn video editing tools! On YouTube they create weekly on-line content, pulling together contributions from members of the congregation who suddenly had to adapt to read, praying or preaching in front of their phones and tablets. The team created traditional and contemporary style service giving a choice depending on your temperament or how delicate you're feeling. The traditional service has more spoken words and gentler music, the contemporary has more modern music and a craft activity. Interestingly, the on-line services are being watched by more people than would have attended the Sunday services in normal times. For those who would struggle with a service on YouTube, Uplyme Church is also providing a dial-in telephone service which is valued and well attended.

The church is now open again for services. The YouTube and telephone services, and Zoom chat continue to support folk who can't get to church. Because the YouTube service is on-line, it can be experienced whenever convenient. It's usually available from late Saturday night.

Four months of online services have resulted in some truly profound talks. So that these don't get lost, the team are repackaging them as *nuggets* – a brief reading, talk and music. They are ideal for busy people on the go.

Rev Nicky Davies, Team Vicar of the Axe Valley Mission Community said: *"Having only recently been appointed to serve here, I was delighted to discover a range of online content being produced including the YouTube services. What makes the YouTube content so special is the variety on offer: both more traditional and contemporary, and things aimed at young people too. The team that produce this are particularly creative. This has been of huge benefit whilst our churches were closed, and continues to be enjoyed by many, now that we are back with limited services in our churches. Huge thanks must go to all involved."*

If you want to find out more, search for **"Uplyme Church YouTube Channel"** or contact **Rev Nicky Davies** (daviesnickylive@live.co.uk).

# From the Editor

Hello and welcome back to our paper version of the magazine. I know many of you have missed the mag dropping through your door, so we hope we can be at least for a while back to some sort of delivery normal.

I have been contacted by a few people who would like to make a donation to the church for the magazine. You can either send a cheque in to us or if you are more inclined, a “DONATE” button has appeared on the Church Website (address is on the front cover) to which you can make a donation through CAF bank to us. Your financial support is always most welcome and keeps the magazine going.

There have been a number of “live” broadcasts from the church on Sunday’s, and although these are early days and equipment is limited we are getting very good responses. In some cases we get more people looking at the “Youtube” services than the regular congregation.

The Sunday service is being very well attended, although there are limited spaces and a small waiting list is in operation. Strict social distancing is in operation and great care is taken to ensure safety is adhered to. You will be most welcome, and please contact the Churchwarden for booking a place.

Talking of Churchwardens, a very warm welcome to **Jenny Perham** who has taken on the role of Warden and a huge thank you to Martin and Jo who have been magnificent in the role for the past 4 years and steered us through a long interregnum whilst we negotiated with the Diocese for a new Vicar.

The next issue of the magazine is for December and our Christmas issue. Please let me know by 10th November your events and articles to publish.

#KEEPWELL&KEEPSAFE

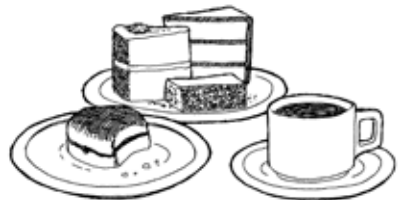
*Ed*

## Join us for ‘tea at 3’

An informal chat on ZOOM  
Wednesdays at 3pm for everyone.

Zoom details available from me (**Shuna**)  
or any of the Axminster clergy team,

**shuna.art@gmail.com**





## Yes, my soul, find rest in God; my hope comes from him.

*Psalm 62 : 5*

I think many of us have been surprised and shocked by the continuing difficulties caused by Covid-19. We have seen our lives change in so many ways. It may be that what we saw as 'normal' – the lifestyles and expectations with which we were comfortable – will not be the same into the long term future.

Some cope with the imposed change but some of us have really struggled, particularly with significant restrictions in face to face contact and conversation and interaction.

The ancient Greek philosopher, Aristotle, wrote : “Man is by nature a social animal.” This remains absolutely true and over the last months we have seen and felt this truth. Without the freedom to meet and interact as we have done in the past, many of us really do find that our health and well-being can be significantly affected. The majority of us need regular contact with other people in order to be our healthy and well adjusted selves.

It is, of course, important that we do whatever necessary to protect ourselves and others from the worst consequences of this dreadful illness, and it would seem that for the present, and potentially well into the future, we will need to continue to maintain social distancing, wear face coverings and do all the other things which have become the new 'normal'. However, we also need to protect each other's mental well-being as best we can. Perhaps a challenge for us all is to make time to simply talk with others. Why not set aside half an hour each day to telephone someone you haven't spoken to for a little while ? It is so important that we don't wait for others to contact us but that we initiate contact. It can make a real difference to someone, and you never know, it may even brighten up your day.

As we come into November and the 'Season of Remembrance' we all know that life has changed significantly since last year. It is especially important to remember those who gave so much and our Services of Remembrance will take place on Sunday 8<sup>th</sup> November. It seems more important than ever to give our support to the Royal British Legion and those who care for our service personnel and families.

There is so much that we can do to support and encourage everyone at this time - and much of it costs very little other than taking time to make contact with people. You really don't know what a positive impact a simple conversation can have on someone who is struggling – and we often don't know who is struggling.

A quotation I love could have been written anywhere in the Bible and for Christians it has a very special and clear interpretation. At this time of continuing Covid response I would commend to everyone this statement from that great philosophical source, Winnie the Pooh !

**“You are braver than you believe, stronger than you seem, and smarter than you think. But the most important thing is, even if we're apart...I'll always be with you.”**

God bless each of us and may we genuinely show practical care and love for each other.

With thoughts and prayers

***Revd Clive Sedgewick***



# ‘JUST THE FLU?’

The flu virus kills thousands every year. The flu vaccine is the best protection for you and those around you.

**JUST GET YOUR FREE FLU JAB**  
Ask your pharmacist or GP if you're eligible.



help us help you



HANDS



FACE



SPACE

**STAY ALERT**

**CONTROL THE VIRUS**

**SAVE LIVES**

# *Light a Candle to Remember*



A quiet, meditative service in which we remember and give thanks for those who have been parted from us by death.

*Sunday 1st November  
6pm*

To ensure your place at this special service please call Marilyn on:  
**07885859946**





# **Remembrance Sunday**

## **8th November**

### **10.00am**

If you would like to come along  
please contact  
**Marilyn Kent** on **07885 859946**  
to book a place



**Following the service wreaths  
will be laid at the  
War Memorial at approx 11.00am**

## WALKS AROUND THE EIGHT AXE VALLEY CHURCHES NO.4 – CHARDSTOCK

The walk around Chardstock is one of my favourites although it is quite short. This may be because I sourced it myself rather than it being one of my late wife Liz's many walks. Taking the road from Axminster towards Chard, we turn left at Tytherleigh, signposted Chardstock and after about half a mile we come to first the primary school and then next door the village hall (see photo) both on the left. We turn into the village hall car park and park here for free.



We walk out of the car park and turn left and the first building we see on the left is the post office which appears to be in the front room of a detached house (see photo). We are now in the main street and we follow it down past the George Inn on the right and very soon on the left is the impressive parish church (see photo). Almost opposite the church is a

footpath sign and we follow this lane for a hundred yards or so to and through a pedestrian gate into a field on the left. Cross this small field diagonally (white ducks in an enclosure) to another gate into a large field and cross this and two further fields straight ahead. The final field goes steeply down and



across to a bridge over a stream. Cross this into a footpath amongst trees and bushes uphill to a gate into a narrow field. Cross this straight ahead to a gate or stile into a road. Turn left here and soon keep left at a fork down past some houses on the right to another wooden bridge where the stream might flood. Keep walking along the road now uphill past Farway Farm on the right and at the top of the hill turn left on to a signed footpath which begins along the drive of a house on the left. Go to the end of the drive (ignoring a footpath on right halfway down) and through a pedestrian gate into a field and cross this diagonally right to and over a stile and continuing in the same direction to a gate in the hedge and into another field. Cross this to the left hand corner where you will enter a pleasant path between trees (signed) and following the footpath signs continue until you emerge at another wooden bridge alongside the road.

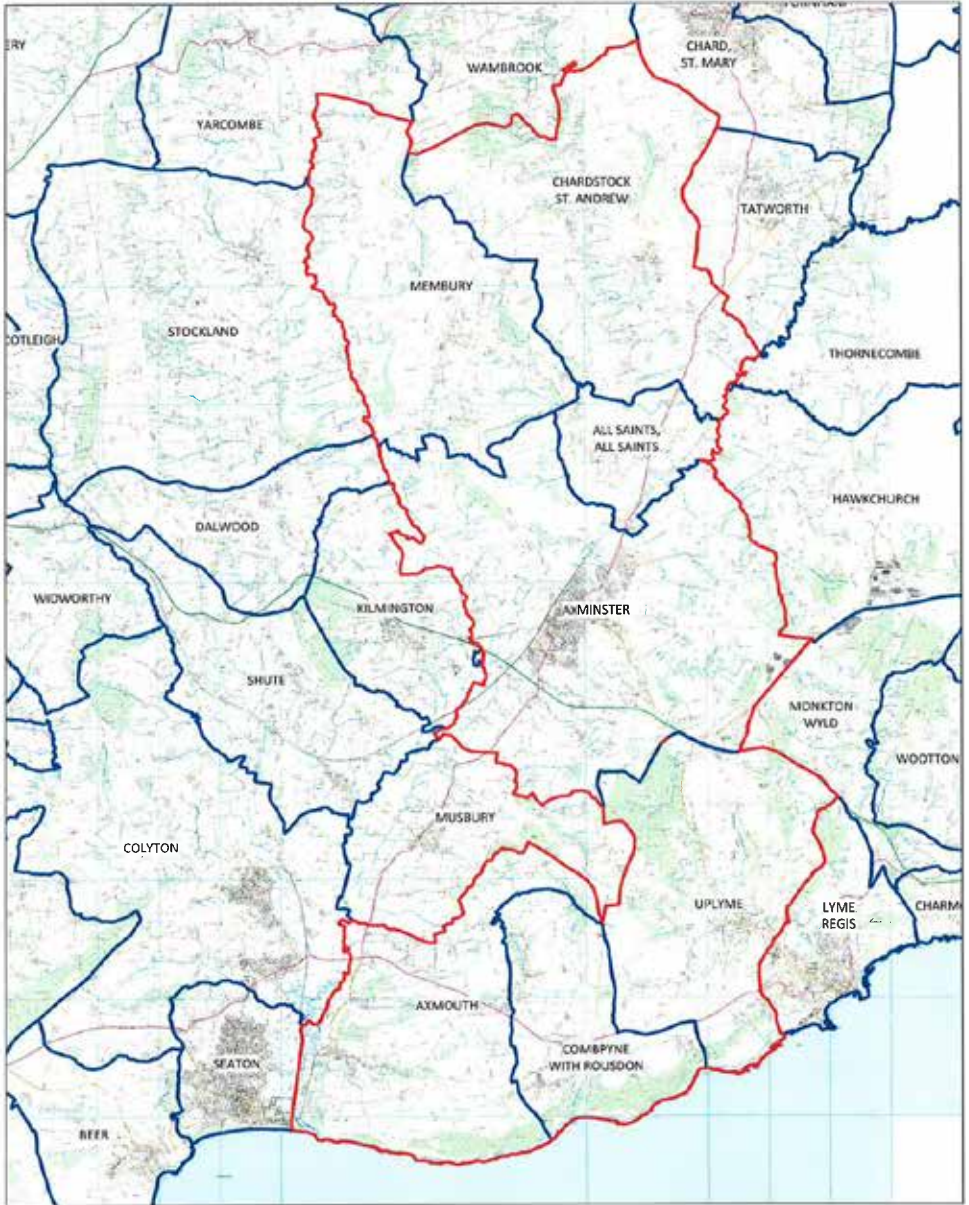
Cross the road here to a footpath sign alongside the stream and follow the stream for fifty yards to a pedestrian gate into a field. Cross this field



diagonally left through a gap in the line of large bushes and then from the top of the hill continue down to a gate in the left-hand hedge. Go through the gate and turn left along the lane and uphill. When the road forks go right and follow the lane until it meets a road at a "T" junction. This is the main street again and if you turn right here

you will soon be back at the village hall car park. There are some good views on this walk, the stream is attractive and the lanes apart from the main street are very quiet. There are often a few cows in the fields and I have encountered two very well behaved horses in the first field after Farway Farm. I would allow around two hours for this walk.

***David Jones***



# LOOKING FOR A NEW DRIVEWAY, PATHWAY, PATIO?

Family-Run Business est. 2015



UNIT 1A, WOODLEYS DRIVE, EXETER RD.  
NEWTON POPPLEFORD EX10 0BJ

## 01395 567 071

[www.drivewaytransformations.co.uk](http://www.drivewaytransformations.co.uk)

PLEASE CALL OR VISIT OUR WEBSITE FOR  
OUR FULL RANGE OF SERVICES



**driveway**  
TRANSFORMATIONS LTD



## All About Upholstery

All aspects of upholstery  
modern, traditional, bespoke  
canework  
soft furnishing: loose-covers,  
window seating, box and  
scatter cushions.

**Anna Doxey**

*Member of the Guild of Traditional Upholsters*

based in Axminster

07540 342058

[aldoxey@googlemail.com](mailto:aldoxey@googlemail.com)



## Mike Ebdon Electrician

For all your  
Electrical needs

Roseneath  
Venlake Lane  
Uplyme  
Devon  
DT7 3SD

Home: 01297 442861

Mobile: 07774642740

### FREE ESTIMATES

All work Part P certified

# BLACK DOG TEA ROOM

OPEN 10am to 5pm Thursday to  
Tuesday - Closed Wednesdays

For Tea, Coffee, Home Made  
Cakes, Light Lunches, Cream  
Teas and Ice Cream.

Phone Rod & Sonia 01297 444063

[www.BlackDogTeaRoom.co.uk](http://www.BlackDogTeaRoom.co.uk)

# LOCAL LOCK FITTER & LOCKSMITHS

- Domestic & Commercial Properties
- Prompt & Professional • Massive Range Of Locks & Security Products To Meet All Your Needs Including uPVC Doorlocks • Supply, Fit & Repair
- 7 Days A Week • All Work Guaranteed
- All Fitting To Insurance Standards

## LYME LOCKS



TEL  
**01297 442673**

MOBILE 07808 695894

email: [david@lymelocks.co.uk](mailto:david@lymelocks.co.uk)  
Lyme Regis-Bridport-Chard  
Honiton-Seaton-Axminster

## ON THE EDGE TAILOR-MADE FRAMES

The Haven, Harcombe,  
Nr Lyme Regis, DT7 3RN



**JENNIE & ADRIAN PEARSON**

01297 444999

[ontheedgeoflyme@btinternet.com](mailto:ontheedgeoflyme@btinternet.com)

**PAINTINGS - PRINTS - PHOTOS - TEXTILES**

## Experienced PIANO AND SINGING TEACHER

Specialities:

- \*Beginners \*Primary age children
- \*Descant recorder \*Theory of music
- \*'Fresh start' \*Enthusiastic adults

Delightful garden studio just outside  
Uplyme

**Adrian Pearson B.A., Cert. Ed.**  
(01297) 442902

## Rob Perry

Garden Machinery  
Lawn Mowers & Power Equipment

Leaf blowers in stock  
at our

local showroom

The Boating Centre  
Axminster EX13 5ST



t: 01297 631314  
e: [sales@robperrygardenmachinery.co.uk](mailto:sales@robperrygardenmachinery.co.uk)  
[www.robperrygardenmachinery.co.uk](http://www.robperrygardenmachinery.co.uk)

Advice Sales Service

## CORNERSTONE

Design & Build

Design, planning & building contractors.  
Extensions, alterations and outbuildings  
including Listed Buildings.

*Local references available*

*Fully insured*

[www.cornerstonedesignandbuild.co.uk](http://www.cornerstonedesignandbuild.co.uk)

Design & planning enquiries:

[zoe@cornerstonedesignandbuild.co.uk](mailto:zoe@cornerstonedesignandbuild.co.uk)

Tel: 07825 210 681

Building work enquiries:

[pete@cornerstonedesignandbuild.co.uk](mailto:pete@cornerstonedesignandbuild.co.uk)

Tel: 07786 267 115

Why not use these quieter times to sort through your favourite photos, to design a new look for your poster and picture displays, or to create an artwork or two?

Until further notice we are able to offer a collect-and-deliver framing service – please phone us on **01297 444999** to arrange for us to pick up your work from an agreed location – then we will discuss your requirements by phone and email as required, before completing the job, and delivering back to your address.



## Mrs Ethelston's Primary School

We have enjoyed a wonderful start to the academic year. Although life in school is a little different at the moment, we are finding creative ways to still enjoy many of our normal activities. We launched a Harvest Worship this week which was enjoyed by many. Normally, we would come together in the church but as

this is not possible at the moment, each class filmed their contribution and we all learnt to sign a hymn. The children all really enjoyed being a part of this special celebration.

This year, we conducted the election of House and Vice Captains very differently. The children in Year 6 have discussed the role and made their own decision if they would like to be considered for it. They created amazing presentations for the whole school to watch, including all the staff and then we voted. I was so impressed that I felt it necessary to create additional ambassador roles. Every child showcased that they are a wonderful role model for our school and I wanted that to be recognised.

These children have already been very busy helping to support the school and we are all very proud of them.

## Miss Lyons

The restrictions due to Covid-19 are changing all the time, but it's still not possible to run Shining Stars in a safe and practical way.



However - we are making up **Craft Packs** suitable for young children (*with maybe a little help from an adult*) to get creative at home.

They will be delivered to homes in the Uplyme area in early November and, if popular, again nearer Christmas.



If you'd like a **Craft Pack** please email [shiningstars@uplymechurch.org.uk](mailto:shiningstars@uplymechurch.org.uk) with your address.

For more information please see :-

Facebook page - Shining Stars Playgroup

web page - [www.uplymechurch.org.uk/congregations/shining-stars/](http://www.uplymechurch.org.uk/congregations/shining-stars/)

or phone - 01297 444499.



## News From The Pub

We near the end of another year as Mine Hosts .... and what a year it has been for all of us. Here at The Pub we continue to adapt the business to the different restrictions, new laws, and rules. We are so proud and grateful to our young team, they have all risen to the 'challenges of enforced change' and their commitment to keeping themselves, each other and our customers safe is admirable.

We are endeavouring a balancing act of needing enough custom to ensure business survival! and not wanting too much custom .. for safety survival.

We receive regular compliments for our ongoing safety awareness efforts, and we were very pleased to have compliments extended from The Lyme News as being the best covid safety establishment in the local area. Thank You Francesca Evans.

Another accolade for Steve came from an unannounced visit from a Guinness representative. After testing the cleanliness of the Guinness lines and of course sampling a pint expertly poured by a member of our team, Steve was awarded a lovely quality approved plaque from The Guinness company which now adorns the wall at the bar. *Da iawn Landlord* .

We have started back our Sunday Roast Lunches, albeit in a different service style. As rules dictate, we now have limited tables, limited party numbers and provide table service only, please do give us a ring if you would like further information on how it all works, and please note booking is essential. 01297 443136

If you would like to come into pub to eat or just have a drink it is always wise to give us a call to reserve a table. In the evenings we only serve food in the top bar and we have allocated the tables in the restaurant for our locals and visitors just wanting a drink.

Usually in this Magazine edition, we inform you of our Christmas plans and this edition despite our rather dampened spirit will be no different!

We have set a date to put up our lights and decorations. I expect ours will be up before our close neighbour... just saying Rob! a bit of jovial local rivalry for many years!



We will be doing our usual Christmas draw, tickets are on sale already, and will be drawn as usual on Christmas Eve (book a table early only limited seats) We will also be serving a Christmas themed menu lunch times and evenings throughout December, again only limited tables so please do book early. (all subject to Government change of course !!)

Our decision as was last year will be, not to open the Pub on Christmas Day or Boxing Day and as I write this my hope 'as was last year' is that we spend these days with our own family. I am sure like many of you, we are hoping local lockdown restrictions will be eased and families like ours can reunite for the festive season.

It can't have gone unnoticed..... we have scaffolding up. Necessity means us having a new roof at that end of the pub. Please accept our apologies for any inconvenience while this essential work is carried out.

It is fantastic that Uplyme Football Club are going from strength to strength. We are very happy to continue our great relationship with the club and through this article like to thank all the players, committee and supporters for the respect and consideration they all show when coming into the pub. We wish you all the best of luck for the rest of the season

As this will be my last News From The Pub for 2020 Steve and I would like to thank each and every one of you who has, and continue to support your Village Pub. We sincerely appreciate you all, The Village Pub would not survive without your valued custom.

To our wonderful, loyal, thoroughly dependable and hardworking team  
Thank You so much... we love you xxx

While we are living through these very uncertain times and not knowing how long this will go on, please forgive if we have to readjust our opening hours. However, please know that we will be doing our very best to keep the pub open for the long term and to keep serving our wonderful Village Community as best we can. Please stay safe, keep well, love and care for each other.

So ... it leaves me then to wish each and every one of you

A Very Merry Christmas and a Healthy and Happy New Year.

*Gyda dymuniadau gorau ar gyfer y Nadolig a'r Fflwyddyn Newydd*

*Llawer o gariad*

**Wendy**

## News from King George's Field.

We are delighted that the field has been so well used during this very different summer. A big thank you for all the hard work put in by the members of the Cricket Club who spent many hours preparing the field for their matches which were finally allowed in July, August and September. Congratulations to the players who achieved so much in a truncated season culminating in their excellent victory at the KGV field in the final of a Devon league competition. With a crowd of over 200, well distributed around the boundary the scene was idyllic and made us all realise what an asset to the community the field is.

The area in front of the old pavilion, which adds so much to the character of the field was looking rather untidy in the middle of the summer. It has been improved and our thanks go to Colin Pratt for mending and painting the broken seat located there and also to John Fowler for the tidying up and all the hard work he puts in to keep the surrounds of the field up together. Some years ago the area in front of the old pavilion was planted with flowers during the summer which really enhanced its look. The trustees were wondering if there was anyone in the village who would like to consider doing this in the future. If you have a love of plants and some spare time and are interested in taking on this community project please get in touch with me - we would love to see this area enhanced.

The members of the Croquet club have worked hard on their lawn and also an extra playing area in front of the old pavilion. The club has made much better use of their lawn than in previous years. This has been possible because a new booking system has been developed which allows matches to be played 7 days a week. They have not been able to play away games this year because of Covid restrictions, but all their internal competitions have been enjoyed on the much-improved lawn behind the beech hedge. Some of their members are now carrying out autumn maintenance on the lawn so it will be ready for next season. The club are a very friendly group who are always looking for new members. If you are interested their website can be found at:  
<https://lymvalleycroquetclub.org.uk>  
or contact the club secretary, **John Marjoribanks**, tel: 01297 33742.

Opening the tennis court and allowing members of the local community to use it without charge for June and July proved very popular. As it is our only regular source of income we have, since August been operating an online booking system and charging £7 per hour to use the court, which is still very good value for money. Booking and payment is easy and can be accessed via the Lawn Tennis Association website at <https://clubspark.lta.org.uk/rally/> or just put Uplyme Tennis into an internet search engine such as google. The gate is now secured with a combination lock and the code is sent each time the court is booked. It is anticipated that affordable annual membership packages will be launched in 2021. Thanks to our trustee Jason Martin who has organised all of this and may be contacted for any tennis related matters at: [jas@jasonmartinsports.com](mailto:jas@jasonmartinsports.com) tel:07931743168.

**James Thomas** (Secretary for King George's Field Trustees)  
[jrhyst@hotmail.com](mailto:jrhyst@hotmail.com)

## The Cenotaph Centenary

**Minister for Defence People and Veterans Johnny Mercer said:**

Remembrance Sunday holds a special place in our national life and I know that many people will be disappointed that they won't be able to attend this year.

But the key part of Remembrance is taking a moment to recognise those who have given their lives protecting this country. I hope that everyone will still be able to reflect on this sacrifice this year, despite the different arrangements.



This year also marks the centenary of the unveiling of the permanent Cenotaph by King George V on Armistice Day 1920 and of the interment of the Tomb of the Unknown Warrior in Westminster Abbey.

Meaning 'empty tomb', the Cenotaph symbolises the unprecedented losses of the First World War and is dedicated to 'The Glorious Dead'. The Cenotaph was designed by Edwin Lutyens and was initially erected as a temporary structure for Peace Day in July 1919. The structure was so popular a permanent version was commissioned. Since then, the Cenotaph has become the focal point of national commemoration. Details of plans to mark this moment will be announced in due course.



The Unknown Warrior was an idea conceived by a Chaplain on the front, the Rev David Railton, after seeing a grave with a rough cross on which were pencilled the words "An Unknown British Soldier". He suggested that an unidentified Soldier from the battlefields of Europe be selected at random and transported to England and be buried amongst the Kings and Queens of Westminster Abbey. King George V led the

procession and Gun Carriage that carried the coffin of the Unknown Warrior for and was Chief Mourner for the service at Westminster Abbey that followed the unveiling of the permanent Cenotaph on Whitehall.



## Diamonds are for lockdown...

Here's an unexpected outcome of Covid-19: it has inspired more of us to get engaged.

Engagement rings sales have risen this year, in some firms by up to 73 per cent, a survey of various jewellery firms has discovered.

When, at the beginning of lockdown, Dr Jenny Harries, the deputy chief medical officer, suggested that couples could get round the coming isolation by moving in together, it seems that many listened to her. They decided to give it a go and 'test the strength of their relationship.'

"A lot of people have now resolved to go ahead and tie the knot," said one jeweller. "Perhaps they are thinking: 'life's too short, let's go for it.'"

Another jeweller said: "Maybe if you can make it through lockdown together, you can make it through anything."

[www.parishpump.co.uk](http://www.parishpump.co.uk)



**Would you like to  
advertise in  
this space?**

**Drop us an email  
to find out what  
good value it is!**

**parishnews@  
uplymechurch.org.uk**

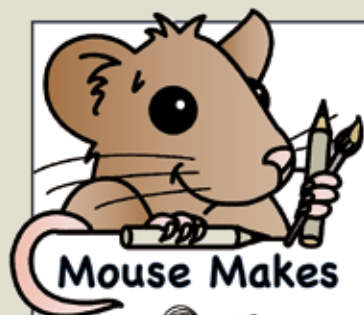
## In praise of peanut butter

One quirky change of life under Covid-19 is that for some reason, we are eating more peanut butter. According to a recent report in The Grocer, sales of the stuff rose by 35.5 per cent in the Spring.

Peanut butter producer Kirstie Hawkins (Whole Earth brand) is delighted. "Peanut butter offers an easy way to add more nutrition to breakfast and snack choices."

Whatever the reason, sales of peanut butter, at £98.9million in the past year, are now £2million more than those for jam.

[www.parishpump.co.uk](http://www.parishpump.co.uk)



## REMEMBERING

How do you remember things?

In bible times God's people would remember what God had done for them by building monuments made of stones and by holding festivals and celebrations to give thanks to God.



**READ** Joshua 4:1-9 and Exodus 12:1-14

Today we too build monuments to remember and hold services of thanksgiving like **Harvest** and **Remembrance Sunday**.



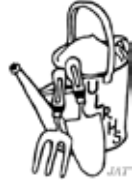
*Is there anything you would like to thank God for?*



REMEMBRANCE • SACRIFICE • VICTORY • TRIUMPH • MONUMENT  
 ROCK • PILE • OBSERVE • TRIBUTE • COMMEMORATE • RECALL • OFFERING  
 HONOUR • CELEBRATE • PRAISE • REJOICE • THANKSGIVING • DAYS  
 FESTIVAL • EASTER • PENTECOST • HARVEST • CHRISTMAS

# Uplyme & Lyme Regis Horticultural Society

*www.ulrhs.wordpress.com*



## Coach trip to RHS Rosemoor

We are pleased to report that we resumed coach trips a couple of months ago and are able to undertake those in a Covid-compliant way, with spaced seating, hand sanitiser and masks being worn while on the coach.

On Sunday November 15<sup>th</sup> we have a coach trip to RHS garden Rosemoor to view the annual sculpture trail. The colour, scent and texture of Rosemoor in winter provides the perfect foil for the sculpture trail, with the Winter Garden featuring spectacular coloured stems, scented winter flowers and a huge diversity of evergreen foliage

The cost is £16 for members; £19 for guests. Please be aware that the restaurant is not open and take away food only is available to purchase. You may also take your own picnic. If you would be interested in this trip please contact Jo Benke-Smith as soon as possible, 07504 442219 [joanna.ulrhs@yahoo.com](mailto:joanna.ulrhs@yahoo.com).

## Future trips and events

The changing regulations around Covid and the onset of winter make it challenging to arrange our events and trips very far in advance. At the moment, we're not able to gather in person to hold meetings and talks. However, we're working hard to find suitable events and are adapting our programme so that we can still find opportunities to get together in a limited way, either in person or virtually. We need to remain flexible, so the programme over the coming months is likely to change from the published schedule. Please keep an eye on our emails, the Society's monthly newsletter and our website to keep up to date.

If you would like to keep up to date through our special newsletter please visit our website **[www.ulrhs.wordpress.com](http://www.ulrhs.wordpress.com)** and scroll down the Welcome page to the link 'Sign up for our monthly email newsletter'.

***Tricia Boyd***



Axminster and Lyme  
Cancer Support

**Affected by cancer?  
Looking for support?  
Need Help or advice?**

During these uncertain times we continue to support but in slightly different ways. We are able to offer free of charge to anyone affected by cancer: -

*Online/telephone counselling & coaching  
Online Yoga & tripudio  
Nordic Walking*

*Now open, our Beach Hut for daily hire -free of charge  
Weekly drop-in via zoom  
Art kits, Jigsaws, Magazines & puzzle books.  
Loan of a book from our comprehensive library.*

We also now have an online shop and you can select local collection/delivery free of charge if local.

**<https://axminsterandlymecancersupport.co.uk/shop/>**

For more details contact

**[info@axminsterandlymecancersupport.co.uk](mailto:info@axminsterandlymecancersupport.co.uk)**

07512 279663

**[axminsterandlymecancersupport.co.uk](https://axminsterandlymecancersupport.co.uk)**

*Axminster and Lyme Cancer Support on Facebook*

# Uplyme Parish Council Notes September 2020

## **New Parish Council Website**

Uplyme Parish Council recently undertook a project to rebuild the website in order to comply with the new regulations involving meeting accessibility guidelines (also known as WCAG 2.1AA compliance). This new website was launched in August 2020 and is now the main and official place to get all Parish Council news and updates. The website has all Parish Council meeting agendas, minutes, financial documents and contact information as well as official sponsored events/initiatives and is the official council communications website.

If you are fortunate to have access to the internet, please visit it here on this link:  
<https://www.uplymeparishcouncil.org/>

## **Residents Advice and Queries**

If you have a query or need advice on Parish Council matters and you feel you are unaware of what the Parish Council/lors do and would like to make suggestions and how we can reach out to the people in Uplyme, especially those based in the rural hamlets.

Please see our easy contact form on our website at [https://](https://www.uplymeparishcouncil.org/)

[www.uplymeparishcouncil.org/](https://www.uplymeparishcouncil.org/) or contact Councillor Andy Turner direct on 07779 030011 or the Clerk.

## **September 2020 Planning Report**

### **Applications considered by Planning Committee from 01/09/2020 to 05/10/2020**

- 20/1774/FUL, Newcastle Cottage, Woodhouse Lane, Uplyme, Lyme Regis, DT7 3SX, Construction of garden shed, Miss Charlotte Eve, Supported
- 20/1712/FUL, Land Adjacent Dell Cottage, Lime Kiln Lane, Uplyme, Lyme Regis, DT7 3XG, Construction of a four bedroom dwelling and formation of parking/ landscaping, Mr David Elford, Supported
- 20/1269/FUL, Harcombe Acres, Land North of Ashcombe Woods, Harcombe, Erection of replacement shed for storage of agricultural equipment and animal feed and laying of hard standing at site entrance, Miss Thomasin Mincham, Does Not Support
- 20/1615/FUL, Land South Of Uplyme Public Footpath 19, Harcombe, Use of shepherds hut and surrounding land for a mixed use comprising agricultural and residential use (overnight accommodation) in association with care of animals on site, Mr Alan Lloyd, Does Not Support



- 20/1883/FUL, The Garage Dwelling, Land North Of Old Woodhouse, Woodhouse Lane, Uplyme, DT7 3XA, Change of use of land to domestic garden to facilitate construction of single storey extension to dwelling and construction of car port, Paul Stratton, Does Not Support
- 20/1900/FUL, Springfield Farm, Harcombe, Lyme Regis, DT7 3RN, Construction of single storey side and rear wrap around extension, Mr R Harvey, Supported
- 20/1297/AGR (Amended), Higher Silverdale, Land East Of Yawl Cross, Lyme Road, Raymonds Hill, (Revised site location plan) The application is for a new general purpose agricultural building for the storage of feed, forage, plant and equipment, Mr I Knuckey, Supported



### **Applications granted or refused by EDDC since 01/09/2020 to 05/10/2020**

- 20/0895/FUL, Sapphires Rest, Cathole Lane, Uplyme, Lyme Regis, DT7 3XE, Improve access/engineering operation to create hardcore track with scalping topping into Woodland Plot, EDDC: Approved, 01-Sep-20
- 20/1224/LBC, The Old Mill, Uplyme, Lyme Regis, DT7 3UA, Alterations to outbuilding change of use to holiday accommodation and ancillary accommodation, EDDC: Approved, 09-Sep-20
- 20/1223/FUL, The Old Mill, Uplyme, Lyme Regis, DT7 3UA, Alterations to outbuilding change of use to holiday accommodation and ancillary accommodation, EDDC: Approved, 09-Sep-20
- 20/1297/AGR, Higher Silverdale, Land East Of Yawl Cross, Lyme Road, Raymonds Hill, The application is for a new general purpose agricultural building for the storage of feed, forage, plant and equipment, EDDC: Approved, 29-Sep-20
- 20/1338/TRE, Sun House, Pound Lane, Uplyme, Lyme Regis, DT7 3TT, fell two Ash trees T1 and T2, EDDC: Approved, 16-Sep-20
- 20/1325/FUL, Land East Of Holcombe Lane, (South Of Valley View), Woodhouse Lane, Uplyme, Lyme Regis, DT7 3SX, Creation of new access and installation of field gate, EDDC: Approved, 03-Sep-20
- 20/1452/FUL, Harcombe House, Harcombe, Lyme Regis, DT7 3RN, Conversion of former swimming pool building to form 3 no. dwellings and associated works, EDDC: Approved, 02-Sep-20

- 20/1654/FUL, Perhams Farm, Harcombe, Lyme Regis, DT7 3RN, Agricultural storage building, EDDC: Approved, 02-Oct-20
- 20/1595/VAR, East Marches, Launchycroft, Lyme Regis, DT7 3NF, Variation of permission 19/2519/FUL (Demolition of existing dwelling and construction of replacement house (including balcony)) to change conditions 2 (approved plans) and 3 (materials) to allow changes to design and approve external surface materials, EDDC: Approved, 15-Sep-20
- 20/1774/FUL, Newcastle Cottage, Woodhouse Lane, Uplyme, Lyme Regis, DT7 3SX, Construction of garden shed, EDDC: Approved, 29-Sep-20
- 20/1297/AGR (Amended), Higher Silverdale, Land East Of Yawl Cross, Lyme Road, Raymonds Hill, (Revised site location plan) The application is for a new general purpose agricultural building for the storage of feed, forage, plant and equipment, EDDC: Approved, 29-Sep-20

### Uplyme Christmas Light Working Group/Sponsors

Uplyme Parish Council are hoping to find volunteers, to help make Christmas special by helping and to raise money for lighting and decorations by forming a working group/committee. Also, any local businesses/companies that would be prepared to sponsor and fund lighting in return for advertising and acknowledgement would be much appreciated. If you believe you can help in any way, please contact Councillor Rebecca Turner on 07590 495909 or email: [becky@southernfilters.com](mailto:becky@southernfilters.com)



### Next Council Meeting

Please join and have your say and/or support us at our next meeting on the:

**Wednesday, 11<sup>th</sup> November 2020** at 7.15pm, online by **zoom video conferencing**.

**All are welcome.**

**Ricky Neave**, Parish Clerk  
 07413 947067 – email: [clerk@uplymeparishcouncil.org](mailto:clerk@uplymeparishcouncil.org)  
 55 Shearwater Way, Seaton, Devon, EX12 2FT  
 (Monday-Thursday, 9-5pm)

For the latest Council news, useful links, contacts and to report problems, current weather and flood alerts and lots more, please visit [www.uplymeparishcouncil.org](http://www.uplymeparishcouncil.org)  
 Or see the “Uplyme Village Noticeboard” on Facebook

**SHERBORNE  
SHOWROOM  
NOW OPEN**

**partners in design**  
CONCEPT TO COMPLETION

Showrooms: 4 Cheap Street, Sherborne DT9 3PK, Tel: 01293 538 100  
2 Church Street, Bournemouth DT8 3AZ, Tel: 01302 538 150  
Mobile: 07733 268225  
Email: barbara@partners-in-design.co.uk



**Complete interior design and project management service**

Working with our trusted in-house team of designers, architects, builders and craftsmen, we will design your perfect home or commercial space and then make all those designs a reality.

From new kitchens to complete refurbishments, we offer every element of interior design and build.

Your designer will work with you throughout, from initial meeting to finishing touches, ensuring perfect results on time and within agreed budgets.

**Total Interiors Service**

Complete Interior Design and Project Management service

Huge range of designer fabrics and wallpapers

Colour schemes and lighting

Build and Architectural services

Bezpoke kitchens and bathrooms

Free standing and built-in cabinetry

Hand made curtains and blinds

Upholstery and reupholstery



[www.partners-in-design.co.uk](http://www.partners-in-design.co.uk)

## PINHAY HOUSE CARE HOME



*"your home from home by the sea"*  
Spacious rooms, in a beautiful house, in a glorious part of Devon



**We are Dementia Care Specialists**

Tel: 01297 445626

Email: [info@pinhayhouse.co.uk](mailto:info@pinhayhouse.co.uk)

[www.pinhayhouse.co.uk](http://www.pinhayhouse.co.uk)

Wool & synthetic carpets,  
vinyls & Karndean  
engineered woods,  
sisal, coir & seagrass,  
rugs to order

Competitive prices with  
fantastic service

For all your flooring needs  
come to:

# Wells Carpet Brokers

**01297 33771**

Castle Hill, Axminster, EX13 5PY  
[www.wellscarpetbroker.co.uk](http://www.wellscarpetbroker.co.uk)



**City &  
Guilds  
NPTC**

**BROADLEAF  
TREE SURGERY &  
GARDEN SERVICES**

**NPTC Qualified Staff & Fully Insured**

Alastair Down

**01297 35364**

**07747 804 773**

[www.broadleafsouthwest.co.uk](http://www.broadleafsouthwest.co.uk)

[work@broadleafsouthwest.co.uk](mailto:work@broadleafsouthwest.co.uk)

- ~ Quality Tree Surgery
- ~ Tree Reports & Surveys
- ~ Forestry Maintenance
- ~ Felling
- ~ Estate Management
- ~ Decking
- ~ Landscaping & Patios
- ~ Site & Garden Clearance
- ~ Hedge Trimming & Laying
- ~ Grass cutting & Strimming
- ~ Planting
- ~ Stump Removal
- ~ Logs & On site splitting
- ~ Wood Chipper & Man for hire
- ~ Fencing - Domestic & Stock

For a free quotation & advice please call

# Smart's Sweeping Service



*Support your local  
trades - use a local  
Chimney Sweep*



*A clean  
chimney is a safe chimney*

Chimney, woodburner and range cooker sweeping.  
Power Sweeping, Bird's nest removal.  
Camera Inspections, Cows and bird spikes fitted.  
Wood-burners, multi-fuel stoves and liners installed.

**07432 118318 or 01404 831288**

**Evening and weekend appointments available.**

Member of The Guild of Master Sweepers.  
HETAS Approved Chimney Sweep.  
HETAS Registered Installer.



Sweep Safe  
accredited.  
Thatch trained.  
NFU Insured.



**NEED A RIDE?**

# TERRY'S TAXI

## 07502 262206

**LOCAL - SHOPPING - AIRPORT  
TRAVEL - HOSPITALS**

**CALL FOR A QUOTE**

**WWW.TERRYS-TAXI.CO.UK**

**BASED IN  
UPLYME**



**TIMBER INTENT  
ARCHITECTURE**

Architecture · design  
planning · building regulations  
prior notice · access  
contract · supervision

**NEW & ECO-BUILD  
EXTEND & CONVERT  
OAK & TIMBER FRAME  
CAMPING & GLAMPING**

Call or email for a free and  
confidential initial visit

(t) 01297 444416

(e) mail@timberintent.co.uk



## Abbeyfield Lyme Regis

Westhill, Silver Street, Lyme Regis

**Independent living in a friendly community.**

We have 10 en-suite studio apartments which offer our residents a choice of their own furniture, décor etc. There is a residents' lounge and lunch and evening meals are provided in the dining room. The house is set in a lovely gardens overlooking the coast and town. Come along and visit us for coffee.

**Contact Christine Holden on (01297) 443783 or  
e-mail us on [Abbeyfieldlymeregis@hotmail.co.uk](mailto:Abbeyfieldlymeregis@hotmail.co.uk)**

***Would you like to support the children in our community?  
Have you time to give to Mrs Ethelston's?  
Then why not become a Governor?***

Mrs Ethelston's school is thriving with an excellent Head and staff and consequently happy children, but we need two new Foundation Governors to join the Governing body. Foundation Governors have to be prepared to support the Christian ethos of the school through their life and actions. . If they are not members of a church, they will need a short informal telephone meeting with a member of the Diocese.

The role involves monitoring the school's activities through meetings, information giving and visits, the visits and meetings being online at present. You need an interest in children, their education, including their religious education and the school's Christian ethos and an ability to write reports . The three present governors are experienced and will provide mentoring. You will also be able to access training.

If you are interested or would like further information, please contact:  
**Corinne Hales** (Chair of Governors), [chales@acornacademy.org](mailto:chales@acornacademy.org)  
or **Jo Cursley** (Deputy Chair) [jcursley@acornacademy.org](mailto:jcursley@acornacademy.org)

If it sounds right for you we can then take you to the next step.

We look forward very much to hearing from you.

***Corinne Hales and Jo Cursley***

## **SATURDAY MORNING FOOTBALL**

We plan to re-start Saturday 31st October **immediately after half term**. This will give us plenty of time to assess the situation and make plans.

We will be on the **AXMINSTER 3G pitch from 9am - 10am**

We will have to abide by track and trace & social distancing and face masks will be required for those watching.

Do contact us for further details & a registration form.

Please email Robin - **[robinvhodges@gmail.com](mailto:robinvhodges@gmail.com)** for further details.

***Robin, Simon, Dave, Fletch, Gavin & Darren***

# Hort Thorts from Nigel Ball

## In The Garden this month

1. Check tree ties are tight on new planted trees,Slacken off on old trees.
2. Sow sweet peas to overwinter ready for early spring planting.
3. Sow herbs indoors for winter use eg Basil and Coriander.
4. Plant Elephant garlic, plant 150mm deep.
5. Take off Celeriac leaves to encourage to bulb up.

Happy Days in your Garden

**Nigel Ball.**



## From my Window

From my window I look through the garden gate  
Beyond I see plants standing tall which I can relate  
Subjects So Slender waving in the wind  
Structure so elegant they do bend.

So what are these plants you do ask  
Well they are grown to use a task  
Strong they are to brave all weather  
To tie some string I bring together

You are still asking what is that plant  
Different colours, Heights and bendy slant  
Of course its Bamboo, for beans, sweet peas they do climb  
And pleasure looking, Glad I had the time.





THE TOWN MILL  
LYME REGIS

It has been a busy time at the **Town Mill Lyme Regis**.

The Mill continued to mill over lockdown to supply the local community with flour.

The Mill has now been adapted for visitors to view the water wheel and interact with a miller safely. Please check the website for opening dates.

The Town Mill operates from visitor donations so why not pay us a visit.

The Galleries re-opened to the public in July and have continued with a full program of artist's.

## **Malthouse Gallery**

**5th- 22nd November**

Lisa Parkyn a vibrant colourful exhibition of paintings

**23rd November-6th December** artist John Dimet exhibits

**5th December - January** Christmas at the Mill a chance for artists and craftspeople to promote their talents appealing to an audience who is looking for that special, personal Christmas gift. Contact [petrinatownmill@gmail.com](mailto:petrinatownmill@gmail.com) for entry conditions.

## **Courtyard Gallery**

**31st October - 25th November** 'Remembrance'

Volunteers have been busy knitting poppies for a cascading poppy installation to enhance this exhibition.

For full details to participate in this exhibition please contact [petrinatownmill@gmail.com](mailto:petrinatownmill@gmail.com)

**28th November - January** Courtyard Gallery welcomes back Vintage Pop Up time to find that unusual preloved gift for Christmas.

***Petrina Muscroft*** - Visitor Experience, Volunteer Leader and Gallery Manager

Tel: 01297 444042

Town Mill Website: [www.townmill.org.uk](http://www.townmill.org.uk)

Town Mill Office: [info@townmill.org.uk](mailto:info@townmill.org.uk)

Please consider a free [donation](#) to our charity when you online shop....please click below to visit our Give As You Live page...

**[www.giveasyoulive.com/join/the-town-mill-trust-lyme-regis](http://www.giveasyoulive.com/join/the-town-mill-trust-lyme-regis)**

## New Uplyme School secures full planning permission...

The Planning Committee of East Devon Council approved a Reserved Matters planning application for the new Mrs Ethelstons Primary School at its meeting of 7<sup>th</sup> October 2020.



The principle of a new school on this site is supported by the Uplyme Neighbourhood Plan and had already been approved in October 2016, in application 15/2424/MOUT. This application also approved layout, scale and access. However, the current proposal included changes to these aspects of the scheme, so these were also re-considered.

In supporting the application, I shared Officer disappointment about some elements of building design but recognised the limitation of the site and the need to deliver 21<sup>st</sup> Century education facilities needed, within flood prevention constraints.

Throughout the application process, I favoured the idea of traffic management which included separate 'in' and 'out' traffic routing, for health and safety reasons and to minimise any potential impact on the Petrol Station.

Unfortunately, this approach was not supported by Devon County Council (as the Highways Authority) or Devon & Somerset Fire and Emergency Service. Committee discussion then focussed on steps which could be taken to minimise road safety risk and satisfy the reasonable concerns of all other interested parties. Areas considered included possible road marking and signalisation typical of similar roads near to school premises.



Committee members were advised that they could not include a Highways requirement 'condition' if they were minded to approve the application, as Devon County Council is the responsible authority. Any such scheme would need to be agreed through DCC's East Devon Highways and Traffic Orders Committee (HATOC)

Members were reassured by the comments of DCC Highways Officer, Jerry Upfield who agreed to support an appropriate proposal at the HATOC. The Planning Committee Chair then asked me, as our EDDC Ward Member (Planning Authority) to collate such a proposal and bring to the HATOC through our Devon County Council Member, Cllr Ian Hall. Cllr Hall is also the Vice Chair of that committee. The application was then unanimously approved.

I can confirm that I have already contacted Cllr Hall, to 'get the ball rolling'. The next HATOC Meeting is scheduled for 4<sup>th</sup> December.

The full Planning Committee meeting video recording is available on YouTube at <https://youtu.be/1TwBOP6EhYQ> The school application starts approximately 18 minutes in. My Ward Member comments are 49:30 min.

### **EDDC Response to Covid Pandemic...**

East Devon District Council continues to work with Central Government and local partners to support residents and businesses affected by the Covid Pandemic.

As the pandemic and government response continue to evolve rapidly, our Council publishes comprehensive, regularly updated guidance on its website at <https://eastdevon.gov.uk/coronavirus-covid-19/>

The section includes links to the latest sections for;

- Business, employers and employees
- Wellbeing
- Community Support
- Benefits and Council Tax
- Test and Trace Support Payment
- Information for Holiday Makers

Together with other useful details on Council Services and links to other useful resources for school closures, critical workers, domestic abuse victims and disabled people.

My best wishes, keep safe...

Ian

**Cllr Ian Thomas**  
**Independent Ward Member for Trinity**  
**East Devon District Council**

**Phone:** 07884 494474

**email:** [ian.thomas@trinitymatters.co.uk](mailto:ian.thomas@trinitymatters.co.uk)

**Facebook:** [@CouncillorIanThomas](#)

**Twitter:** [@CllrIanThomas](#)

# Village Hall Booking Dates

## **REGULAR HIRERS**

THE VILLAGE HALL WILL RE-OPEN  
ON SEPTEMBER 1<sup>ST</sup> TO A SMALL  
NUMBER OF REGULAR HIRERS

### **Uplyme Pre School/ Term time only**

Mondays 9am-3.30pm

Wednesdays 9am-1.15pm

Tuesdays/Fridays 9am- 1.15pm

### **Toddlers**

Tuesdays 1.45pm-3.45pm

### **School – Mrs Ethelstons/Term time only**

Thursdays 9am- 3.30pm

### **YOGA**

Thursdays 6.30pm-8.00pm

### **Short Mat Bowls**

Mondays 7.30pm-10.00pm

### **Patchwork ladies**

1<sup>st</sup> Wednesday of every month

1.30pm-4.30pm

### **Viaduct ladies group**

Every Wednesday 1.45pm – 3.15pm

Meeting room

### **Parish Council**

2<sup>nd</sup> Wednesday of each month

7.15pm-10pm

### **Horticultural Society**

4<sup>th</sup> Wednesday of each month

7pm-9pm

### **Mainly Ballroom**

Saturdays 8pm-11pm (check dates)

### **Quakers**

Sundays 9.30am – midday

### **Village hall committee meeting**

1<sup>st</sup> Tuesday of each month 7.30pm onwards

**PLEASE CONTACT YOUR  
ORGANISER FOR FURTHER  
DETAILS**

**WE WILL REVIEW THE SITUATION,  
FOLLOWING THE GOVERNMENT  
GUIDELINES IN OCTOBER**

**NO NEW BOOKINGS WILL BE  
TAKEN AT PRESENT**

**IF YOU REQUIRE FUTHER UPDATES IN  
REGARDS TO THE HALL PLEASE CONTACT,**

**Email: [uplymevh@gmail.com](mailto:uplymevh@gmail.com)**

**Visit our website [www.uplymevillage.com](http://www.uplymevillage.com)**

**CALL - 01297 444303 office hours**

**CATCH IT**

Germs spread easily. Always carry tissues and use them to catch your cough or sneeze.



**BIN IT**

Germs can live for several hours on tissues. Dispose of your tissue as soon as possible.



**KILL IT**

Hands can transfer germs to every surface you touch. Clean your hands as soon as you can.



**NHS**

## Parish News Distributor needed.

We now have a few distributors who for one reason or another are unable to deliver the magazine. This is either temporary or it may be a longer term decision.

Kaye very kindly used to deliver for us but has moved away from Uplyme recently. She says : "My delivery rounds are the ones that cover Woodhouse Fields and up to Trinity Hill. Taking in Seaview Lane, Pencroft Lane and St Marys Lane between Woodhouse Lane and Cathole.



It's quite a long walk but a really lovely round to do with good views and plenty of exercise."

So, if you fancy a good walk once a month, please let us know & we'd be delighted to have you join the team.

Many thanks

**Robin - Ed**

Devon Libraries

## 2020 Mobile Library Visits



Your Mobile Library visits  
**UPLYME Car Park**  
every 4 weeks on  
**Thursdays 14:30 – 15:45**

Jan 30<sup>th</sup>, Feb 27<sup>th</sup>, Mar 26<sup>th</sup>, Apr 23<sup>rd</sup>, May 21<sup>st</sup>, Jun 18<sup>th</sup>,  
Jul 16<sup>th</sup>, Aug 13<sup>th</sup>, Sept 10<sup>th</sup>, Oct 8<sup>th</sup>, Nov 5<sup>th</sup>, Dec 3<sup>rd</sup> 2020.

Facebook.com/devonmobilelibraries Tel. 0345 155 1001  
devonlibraries.org.uk/web/arena/mobilelibraries  
Twitter: @DevonMobileLibs

Devon Libraries is part of  Libraries Unlimited   devonlibraries.org.uk

Libraries Unlimited is a registered charity. Every penny spent goes directly towards library services that help make a difference to people's lives and communities. To donate, please visit [librariesunlimited.org.uk](http://librariesunlimited.org.uk)

Registered charity number: 117092



"Given the state of our heating system, you'd think the vicar would be all for it!"

# Uplyme Church

Pound Lane, Uplyme, DT7 3TT

part of the Axe Valley Mission Community



## Team Vicar (Uplyme)

email

Tel

## Rev Nicky Davies

daviesnicky@live.co.uk

c/o

441986

## AVMC Team Rector

email:

Tel

## Rev Clive Sedgwick

clives1865@gmail.com

c/o

792120

## Reader

Roger Grose

22107

## Church Administrator

email:

Louise Collard

441986

axevalleymc@hotmail.co.uk

## Opening times:

**Monday**

**09.00 – 12.00**

**Tuesday**

**09.00 – 12.00**

**Wednesday**

**09.00 – 12.00**

**Thursday**

**12.30 – 15.30**

**Friday**

**09.00 – 12.00**

## Churchwardens

Jenny Perham

32254

Hon Treasurer

Phillip Tolhurst

678475

Safeguarding Advisor

Jo Clarke

443050

Noreen Watson

Church Membership

Mike Maccoy

442321

Pastoral Co-Ordinator

Roger Grose

22107

Youth Work

Simon Smith

647521

Under 5's

Janet Impey

441986

Festival Choir

Adrian Pearson

442902

Flower Rota

Felicity Langford

441986

Saturday Football

Robin Hodges

445180

Mrs Ethelston's School Head

Katie Lyons

442210

Church News Update

Church Office

441986

Parish News Editor

Robin Hodges

445180

*Redlands, Lime Kiln Lane, Uplyme, Lyme Regis, Dorset, DT7 3XG*

**Email:**

parishnews@uplymechurch.org.uk

**Uplyme Church Registered Charity Number 1131962**

All telephone numbers are STD code 01297 unless otherwise stated.